

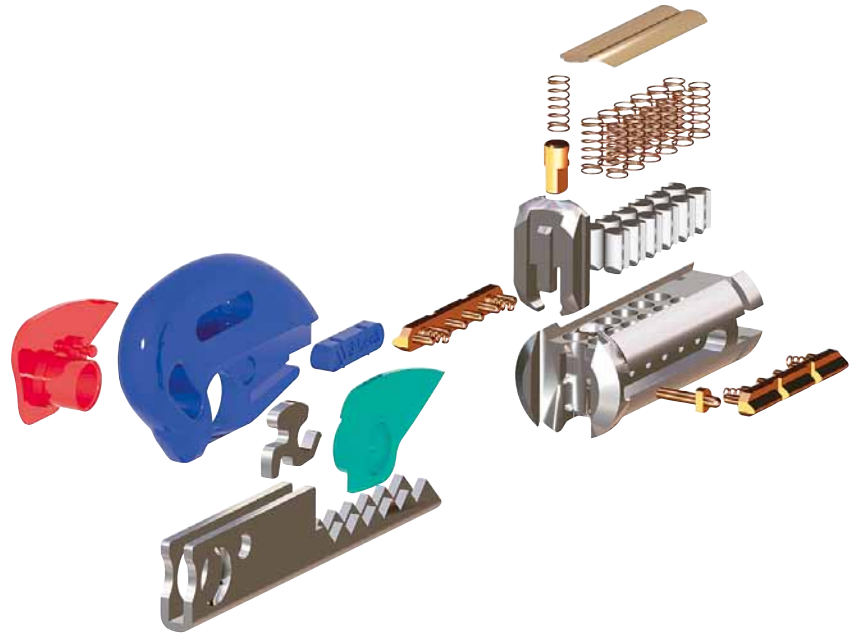
The BiLock revolution

Each BiLock cylinder is probably best described as two locks in one. The dual-bladed keys are cut on two independent rows of pin tumblers, each row of pins in turn activating a separate side bar. In addition to the many inbuilt features that prevent picking, the pins are especially shaped and ‘blunted’ to frustrate attempts at impressing. Each cylinder can also be fitted with optional hardened steel pins to resist drilling.

BiLock’s ingenious design allows this high security mechanism to be installed in virtually all of the current planned locking systems that your business may use.

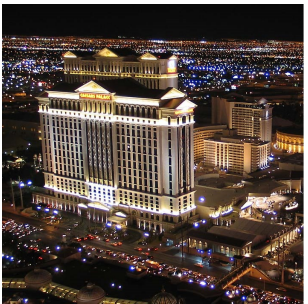
BiLock also offers economical on-site servicing by authorised dealers. The ability to change combinations simply and speedily means that lost keys should no longer compromise your security.

Your BiLock dealer will maintain and upgrade your key registration records to safeguard the security and integrity of your organisation’s master keying system at all times.



- ▲ **8 and 12 PIN DESIGNS FOR OPTIMUM SECURITY** - BiLock has up to twice the number of pins compared to most conventional locks - plus two sidebars for double the security.
- ▲ **DUAL-BLADED KEY** - Each blade is cut to a different combination before forming the distinctive ‘U’ shape. Effectively, you have two different keys operating simultaneously in one lock.
- ▲ **VIRTUALLY IMPOSSIBLE TO PICK** - The 8 and 12 pin designs, dual side bars, ‘U’ shaped keyway and secondary false holes in the pins all combine to offer an unparalleled pick resistant BiLock cylinder.
- ▲ **KEY DUPLICATION** - Duplication is limited to authorised dealers through Australian Lock Company’s cutting and key forming equipment. Customer authorisation is essential for duplication.
- ▲ **HIGH INTEGRITY MASTER KEYING** - Strictly controlled duplication, computerised key registration and the vast number of keying combinations ensure the long term integrity of your system.
- ▲ **CONVERT YOUR LOCKS TO HIGH SECURITY** - BiLock cylinders allow you to easily add high security to your locking system. If necessary, BiLock can even design and manufacture special locks to suit your needs.

Respected organisations who rely on BiLock include...



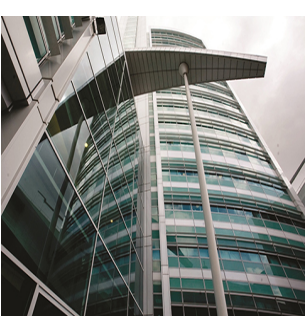
Caesar's Palace Casino - Las Vegas



Star City - Sydney



The Royal Courts of Justice - London



University College Hospital - London



Olympic Park - Homebush



British Airways World Cargo

ABC Television

Australian Security Intelligence Organisation

Australian Federal Police

Bank of America

Barclays Bank

British Airways World Cargo

Caesar’s Palace Casino - Las Vegas

Coca Cola

Councils (*Various*) - United Kingdom

Housing Associations (*Various*) - United Kingdom

Kuala Lumpur’s International Airport

Kingston University - London

Royal Australian Mint

Sydney Harbour Casino

The Royal Courts of Justice - London

TK Maxx

University of California - Los Angeles

University College Hospital - London

...and hundreds of thousands of others worldwide!

*BiLock products, systems and accessories are exclusively distributed & supported in the UK & Ireland by Q-Locks Ltd.*

Q-LOCKS

Unit 3, Gateway Mews, London, N11 2UT

**Phone:** +44 (0)20 8368 5933

**Email:** sales@q-locks.co.uk

**Web:** www.q-locks.co.uk

“While attention to detail and due care is taken at the time of publication of this brochure, the Australian Lock Company Pty Ltd reserves the rights to delete, change product specifications or any other component of this publication as deemed necessary.”

Ultimate Master Key Systems

Maximum Security Locking Systems



[www.australianlock.com.au](http://www.australianlock.com.au)



Q-LOCKS





Your assurance of quality & integrity...

Since 1980 and as we move forward into the millennium, BiLock offers the security conscious individual, firm or public body a fully integrated, high security lock system designed to meet all high security needs with minimum cost and maximum flexibility.

BiLock's distinctive dual edged key and logo symbolise quality, which has been acknowledged by two Australian Design Awards and has taken Australian Lock Company to the "top 500" status for privately owned growing firms in NSW. The Australian Lock Company has been a recipient of both the NSW Telstra and Australian Government Small Business and Manufacturer of the Year awards.

BiLock high security locking system offers genuine security, quality production with legal protection.

Government endorsed Security...

Through a close association with "Security Construction and Equipment Committee [SCEC]" ... the Australian Government's official protective security adviser, both Standard and Quick Change Core [QCC] BiLock has been endorsed into the highest recordable SCEC categories for key operated locks. Standard BiLock is in fact rated to the highest possible level, known as "Secure Area" status, while QCC is rated as "intruder resistant" status but for many installations can be upgraded to "Secure Area" status with approval from SCEC.

In addition, the BiLock First Generation camlock cylinders (models FA32279 and FA32279Q) were tested by the Underwriters Laboratory Inc. (UL) in the USA and we are pleased to advise: '...The camlock cylinders ... are in compliance with the attack test requirements of UL437 for the cabinet locking cylinder category (2 minute attack test).' Lanny Gray, Staff Engineer, Conformity Assessment Service, Underwriters Laboratory Inc.

We are proud to produce what is, to our knowledge, the only Australian designed and manufactured lock cylinders to achieve these levels of endorsement.

Manufacturing...

BiLock cylinders are manufactured at the company's modern new plant at Unanderra (south of Sydney), Australia. The plant is also a distribution point for BiLock products to over 140 authorised agents throughout Australia, New Zealand, South East Asia, United Kingdom, Europe, Middle East, and North America, to mention a few. The packing and dispatch is computerised, enabling the company to dispatch most products quickly and efficiently.



Switchlocks



Camlocks



Padlocks



Mortise lock cylinders



Rim lock cylinders



Mortise lock cylinders



Key in knob lock cylinders

QCC BiLock's Quick Change Core!  
- a revolution in maximum security locking systems

A genuinely innovative locking system which offers absolute flexibility. BiLock offers a patented QCC (Quick Change Core). Re-keying a lock can be as simple as withdrawing a plug and replacing it with another ...in seconds! Every QCC is identical, with the exception of pinning combinations (where requested), which means you can shift the same QCC between different types of locks.

Quick Change Core (QCC)

- no need to disassemble the lock to change a combination  
- using the QCC tool, just remove the old core and insert a new one

Plastic key head comes in 20 different colours for ease of master keying system identification.

BiLock's unique dual bladed and 'U' shaped key - virtually two keys in one!

Over 16 million combinations

Simplicity...

easy use and minimum maintenance!

Durability...

fewer moving parts and stronger key!

Tamper Resistant...

a high level of pick resistance and legal protection!

Flexibility...

Up to 17 million combinations in QCC New Generation and standard versions (which means large master key systems are achievable).

Compatibility...

BiLock QCC, New Generation and standard cylinders can retrofit most hardware!

New Generation

The Australian Lock Company is proud to now also offer the New Generation BiLock maximum security locking system. Like its predecessor, this New Generation of BiLock is "Light Years Ahead of its Time" and will undoubtedly also serve the test of time.

New Generation offers an innovative new look and twin bladed key which operates a 12 pin program of tumbler pins, six on either side. These pins, in turn, activate two sidebars to provide the end user with up to 17 million possible lock combinations. In addition to a space age moving element within the key, an extraordinary shaped, horizontally positioned security rod has been built into the cylinder core to activate the 13th locking dimension. Without the moving element, this 13th dimension cannot be activated... adding yet another feature to BiLock's already exceptional level of security.

The New Generation's contemporary style keyhead also takes it to the space age. The three piece set (body and two sides) offers 20 different colours which can be interchanged, giving the end user up to 8,000 possible colour combinations. Great for incorporating company logo colours!

Finishes...

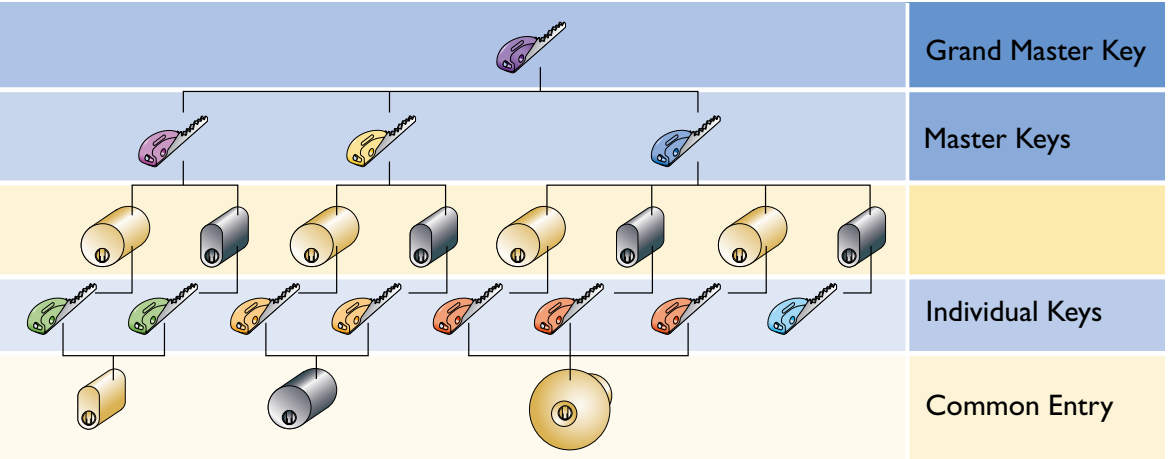
Standard finishes are Satin Chrome, Chrome Plate & Polished Brass, with soft finishes such as Florentine Bronze, Black Chrome and Bright Chrome Plate. Other finishes are available upon request at an additional cost. We always like to let our customers know that our soft finishes will discolour with age and use when exposed to the elements.



The Colour Key System...

BiLock uniquely offers 20 key head colours in the First Generation old style and 20 key head colours in the New Generation range. This is an integral feature of the key, which can be used to visibly differentiate levels of access within a Master Key System.

Typical BiLock Master Keying Arrangement



So-called "Master Key Systems" have almost become a generic term, however BiLock offers virtually infinite combinations with tightly controlled security and visual (colour) differentiation.

The BiLock key system utilises up to 12 chambers with 4 pin depths per chamber. The sum of these combinations gives 16,777,216 actual key combinations per 12 pin profile to enable the generation of powerful Master Key Systems using any combination. Authorised BiLock agents have access to our computerised master key generated system, which allows them to build extremely complex and diverse Master Key Systems without compromising security.



The latest installations of QCC include the prestigious Niagara [Canada], Crown [Melbourne], Sky City [New Zealand] and Sydney Harbour Casinos.

Master keying... How it works!

Key features of BiLock...