







CATALOGUE 2019

BiLock New Generation	Euro	1.1	
	British Oval, Keys	1.2	
	Rim, Oval	1.3	
	Quick Change Core & Padlocks	1.4	
Anker	Cylinder systems / Anker K	2.1	
	British Oval	2.2	
	Euro	2.3	
	Rim, Oval & Keys	2.4	
Anker Magnet	Euro, Rim	2.5	
	Oval & Cam	2.6	
Anker Infinity	Euro, Rim	2.7	
	Oval & Cam	2.8	

BiLock New Generation cylinders incorporate a unique twelve pins plus trigger mechanism. Making Bi-Lock keys requires special dedicated machines which are available only to contracted Bi-Lock dealers. Key security is very high. The twelve pin mechanism copes routinely with the most complex master keying requirements. Interchangeable cylinder cores and 18 key head colours have revolutionised control.

Quick change cores are available with most cylinder types

Standard finish is bright chrome-plated

Other finishes polished brass, black chrome, bronze: please ask

Cylinders supplied keyed differently, keyed-alike or master-keyed

2 keys per differ



Single Euro



CODE	LENGTH	SPLIT
BHE45	45	35/10
BHE50	50	40/10

Double Euro



CODE	LENGTH	SPLIT
BDE70	70	35/35
BDE35/45	80	35/45
BDE80	80	40/40
BDE40/50	90	40/50
BDE40/60	100	40/60
BDE70	70	35/35

Thumb-turn Euro

Please indicate which side the knob should be fitted.

NB When specifying the dimensions, the first number relates to the thumb-turn side - e.g. KE30/40 - thumb-turn on the 30mm side.



CODE	LENGTH	SPLIT
BKE70	70	35/35
BKE35/45	80	35/45
BKE80	80	40/40
BKE40/50	90	40/50
BKE40/60	100	40/60
BKE70	70	35/35
BKE35/45	80	35/45
BKE80	80	40/40
BKE40/50	90	40/50

KEY & DIMENSIONS

KD - Keyed Differently

KA - Keyed Alike

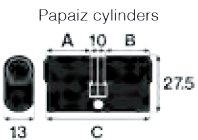
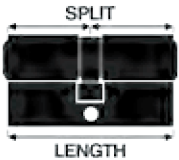
MK - Master-Keyed

MKS - Master-Keyed to Specified Key Number

ResK - Restricted Keyway

RegK - Registered Keyway

Pack - How many are in a box



Q-Locks Ltd
Unit 3, Gateway Mews,
London, N11 2UT
Phone: +44 (0)20 8368 5933
Email: sales@q-locks.co.uk
Web: www.q-locks.co.uk



BiLock New Generation cylinders incorporate a unique twelve pins plus trigger mechanism. Making Bi-Lock keys requires special dedicated machines which are available only to contracted Bi-Lock dealers. Key security is very high. The twelve pin mechanism copes routinely with the most complex master keying requirements. Interchangeable cylinder cores and 18 key head colours have revolutionised control.

- Quick change cores are available with most cylinder types
- Standard finish is bright chrome-plated
- Other finishes polished brass, black chrome, bronze: please ask
- Cylinders supplied keyed differently, keyed-alike or master-keyed
- 2 keys per differ



Single British Oval



CODE	LENGTH	SPLIT
BHO45	45	35/10

Double British Oval



CODE	LENGTH	SPLIT
BDO70	70	35/35

Thumb-turn British Oval



CODE	LENGTH	SPLIT
BKO70	70	35/35

Keys



18 Key head colours
All BiLock keys are Registered
For extra keys please contact the dealer
whose name is engraved on the key



Rim cylinder



CODE	LENGTH
BRC	-

Screw-in cylinder

Single



CODE	LENGTH
BSC	31

Scandinavian oval



	CODE	LENGTH
Exterior	BSO-E	31
Interior	BSO-I	31

Australian oval



CODE	LENGTH
BAO	34

Abloy type mortice



CODE	LENGTH
BAMC	25

Quick change cores are available with most cylinder types.

Cylinders may be supplied keyed differently, keyed-alike or master-keyed.

Standard finish is bright chrome-plated.

Polished brass and other finishes, e.g. black

chrome and bronze are available, please ask.

2 Keys per differ.

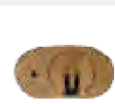
QCC replacement core

Replacement core for all QCC locks, includes two keys



CODE
B5-P-QCP

BiLock padlocks



	CODE	W
Brass body	BP30	30
Plastic body	BP30P	30

Federal padlocks



Furniture locks



Ankerslot is an independent Dutch company, established in 1946, that now occupies its own purpose-built factory in Enschede, eastern Netherlands. Ankerslot uses the most up-to-date computer-controlled machinery; research, development and design are carried out in-house, and the factory is registered under ISO 9001

Ankerslot cylinders are manufactured to the most uncompromising standards of quality and functionality.

Ankerslot provides hard wearing cylinders designed and made to meet the day-to-day demands of large institutional master keyed suites.

Key control is arranged to suit the end user's requirements: an Ankerslot trained and supported locksmith may be authorised to hold key blanks in order to give quick and secure local service. Keys may be registered with Q-Locks Ltd. Extra keys will then be supplied only against the registered instructions and signatures. Key blanks for these systems will never be sold to the trade. Magnetic keys, which are virtually impossible to copy, are made only at the Ankerslot factory.

The technical team at Q-Locks will provide help and advice with specification of cylinders, locks and the complete ironmongery schedule, design of appropriate and practical master key suites, training and support of locksmiths and after-sales support and assistance for the life of the suite.

Anker Project

Anker Project Cylinders comprises 750 key profiles. Anker Project cylinders are ideal for master keying.



Anker Magnet

Anker Magnet Cylinders offer the smoothest safest key of all! The Anker Magnet locking mechanism comprises eight horizontally activated magnets acting in pairs plus four special pins. Where key security is paramount, Anker Magnet is unsurpassed.

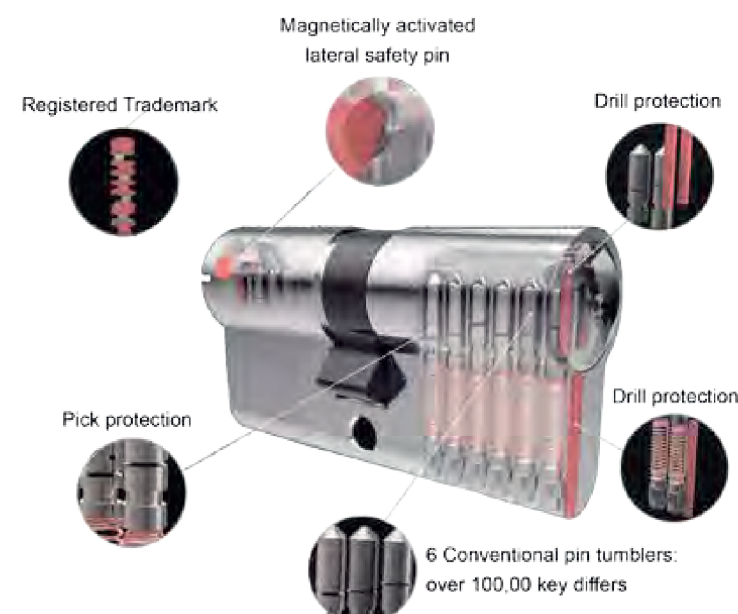


Anker Infinity

Anker Infinity Cylinders incorporate the Anker Registered Trademark in the key profile, achieving perpetual legal protection for their key profiles. In addition Infinity keys carry two distinct profiles in the same key: illicit copies are extremely difficult to make.



Infinity-K Project-K



The Anker-K is a spring loaded lateral magnet in the cylinder. Both the key security and the cylinder security of Anker Infinity and Anker Project may be greatly enhanced by the addition of the unique magnetic device. It is operated by the Anker-K key but is entirely separate from and not accessible through the keyway.

- Prevents the illicit copying of key profiles by 3D printers or milling machines
- Makes picking or manipulation or bumping of the cylinder virtually impossible
- Can be used to strengthen security for particular cylinders in a master keyed suite
- Can be used to improve control of master keys
- Extends legal protection with a new patent until 2030

Please get in touch with us for more information.



Patented Profiles - May be drill protected

All Anker 9000 Cylinders suites are built to order

Cylinders listed here are supplied fully assembled - master-keyed, keyed-alike or keyed to differ

Two keys *per differ*

MKS cylinders are supplied without keys

If extra keys are required they must be specifically ordered

Standard finishes Matt nickel & matt brass

Finishes to order Polished brass, bright

chrome and bronze *The lead time is up to 3 weeks.*

Single British oval

Other oval cylinder sizes are available, please ask

CODE	LENGTH	SPLIT
AN/HO45	45	35/10

Double British oval

Other oval cylinder sizes are available; both symetrical and offset - please ask

CODE	LENGTH	SPLIT
AN/DO60	60	30/30
AN/DO70	70	35/35
AN/DO80	80	40/40

Thumb-turn British oval

Other oval cylinder sizes are available; both symetrical and offset - please ask

Please indicate which side the knob should be fitted.

Alternative knob turns: large; round; peanut; please ask for more information

Oval Single Thumbturn available - HOK45 - C4.3

CODE	LENGTH	SPLIT
AN/KO60	60	30/30
AN/KO70	70	35/35
AN/KO80	80	40/40
AN/HOK45	45	35/10

Anker Project Cylinders comprises 750 patented key profiles. All Project cylinders are assembled to order in the U.K. and may be supplied as

Restricted (key blanks are available to some locksmiths for swift local service), or Registered (cut keys provided against registered signature only;

no key blanks are sold). Anker Project cylinders are ideal for master keying.

Patented Profiles

May be drill protected

All Anker 9000 Cylinders suites are built to order

Cylinders listed here are supplied fully assembled

- master-keyed, keyed-alike or keyed to differ

Two keys *per differ*

MKS cylinders are supplied without keys

If extra keys are required they must be

specifically ordered

Standard finishes Matt nickel & matt brass

Finishes to order Polished brass, bright

chrome and bronze *The lead time is up to 3 weeks.*

Single Euro cylinder

Adjustable cam: eight positions

CODE	LENGTH	SPLIT
AN/HE40	40	30/10
AN/HE45	45	35/10
AN/HE50	50	40/10
AN/HE55	55	45/10
AN/HE60	60	50/10
AN/HE65	65	55/10
AN/HE70	70	60/10
AN/HE75	75	65/10

Double Euro cylinder

CODE	LENGTH	SPLIT
AN/DE60	60	30/30
AN/DE30/35	65	30/35
AN/DE30/40	70	30/40
AN/DE30/45	75	30/45
AN/DE30/50	80	30/50
AN/DE30/55	85	30/55
AN/DE70	70	35/35
AN/DE35/40	75	35/40
AN/DE35/45	80	35/45
AN/DE35/50	85	35/50
AN/DE35/55	90	35/55
AN/DE35/60	95	35/60
AN/DE35/70	105	35/70
AN/DE35/70B	105	35/70
AN/DE80	80	40/40
AN/DE40/45	85	40/45
AN/DE40/50	90	40/50
AN/DE40/55	95	40/55
AN/DE40/60	100	40/60
AN/DE90	90	45/45
AN/DE45/50	95	45/50
AN/DE45/55	100	45/55
AN/DE100	100	50/50

Thumb-turn Euro cylinder

Please indicate which side the knob should be fitted*

Alternative knob turns: large; round; peanut; please ask for more information

Single thumbturn HEK/40 see page C4.1

* Note that when specifying the dimensions, it is the first dimension that relates to the knob turn. e.g. KE30/40 = knob turn on 30mm side.

CODE	LENGTH	SPLIT
AN/KE60	60	30/30
AN/KE30/35	65	30/35
AN/KE30/40	70	30/40
AN/KE30/45	75	30/45
AN/KE30/50	80	30/50
AN/KE30/55	85	30/55
AN/KE70	70	35/35
AN/KE35/40	75	35/40
AN/KE35/45	80	35/45
AN/KE35/50	85	35/50
AN/KE35/55	90	35/55
AN/KE35/60	95	35/60
AN/KE35/70	105	35/70
AN/KE80	80	40/40
AN/KE40/45	85	40/45
AN/KE40/50	90	40/50
AN/KE40/55	95	40/55
AN/KE40/60	100	40/60
AN/KE90	90	45/45
AN/KE45/50	95	45/50
AN/KE45/55	100	45/55
AN/KE100	100	50/50



Patented Profiles - May be drill protected

All Anker 9000 Cylinders suites are built to order

Cylinders listed here are supplied fully assembled - master-keyed, keyed-alike or keyed to differ

Two keys *per differ*

MKS cylinders are supplied without keys

If extra keys are required they must be specifically ordered

Standard finishes Matt nickel & matt brass

Finishes to order Polished brass, bright chrome and bronze *The lead time is up to 3 weeks.*

Anker Magnet Cylinders offer the smoothest safest key of all!

The **Anker Magnet** locking mechanism comprises eight horizontally activated magnets acting in pairs plus four special pins. The keys, with eight cubical magnets are virtually uncopyable. Where key security is paramount, Anker Magnet is unsurpassed. Every key is registered.

SKG★★★

All keys are registered

Extra keys on registered authority only

Anti-pick, anti-drill, anti-bump

More than 1,000,000 key differs

Suitable for complex master-keying



Rim cylinder

Fits standard rim night latch cases



CODE	LENGTH
AN-RC	26

Screw-in cylinder

Single

Typically used with narrow style swing bolt locks



CODE	LENGTH
AN-SC	25

Scandinavian oval

Fits standard Scandinavian locks



	CODE	LENGTH
Exterior	AN-SOE	31
Interior	AN-SOI	31

Cabinet & Cam locks

24mm diameter



Keys

Restricted keys Orders must be in writing and accompanied by a letter of authority from the owner of the cylinders specifying the key number

Registered keys Orders must be signed by one of the registered signatories



Extra keys	With order
	Ordered later

Double Euro

33.5 | 33.5 Split Each side of the cylinder may be increased in steps of 5mm from 40mm - 65mm



CODE	SPLIT
ANM-DE67	33.5 33.5

Thumb-turn Euro

33.5 | 33.5 Split Each side of the cylinder may be increased in steps of 5mm from 40mm - 65mm



CODE	SPLIT
ANM-KE67	33.5 33.5

Single Euro

33.5 | 10 Split Each side of the cylinder may be increased in steps of 5mm from 40mm - 65mm



CODE	SPLIT
ANM-HE43	33.5 10

Rim cylinder



CODE
ANM-RC

ANKER

ANKER

Anker Magnet Cylinders offer the smoothest safest key of all!
SKG★★★

All keys are registered
Extra keys on registered authority only
Anti-pick, anti-drill, anti-bump

More than 1,000,000 key differs
Suitable for complex master-keying

Scandinavian oval



	CODE
External	ANM-SOE
Internal	ANM-SOI

Screw-in cylinder



CODE
ANM-SC

Cam lock



CODE
ANM-CL

Switch lock



CODE
ANM-SW

Cabinet lock



CODE
ANM-CAB

Anker Infinity Cylinders incorporate the Anker Registered Trademark in the key profile. As a Trademark never expires, Anker have achieved perpetual legal protection for their key profiles. In addition Infinity keys carry two distinct profiles in the same key: illicit copies are extremely difficult to make. As the supply of key blanks and components is tightly restricted to contracted Anker dealers, key security is very high but speedy local service is available.

SKG★★★

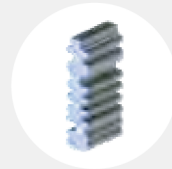
All keys are registered

Extra keys on registered authority only

Anti-pick, anti-drill, anti-bump

More than 1,000,000 key differs

Suitable for complex master-keying



Single Euro

Adjustable cam: eight positions



CODE	LENGTH	SPLIT
INF/HE40	40	30/10
INF/HE45	45	35/10
INF/HE50	50	40/10
INF/HE55	55	45/10
INF/HE60	60	50/10
INF/HE65	65	55/10
INF/HE70	70	60/10
INF/HE75	75	65/10

Double Euro



CODE	LENGTH	SPLIT
INF/DE60	60	30/30
INF/DE30/35	65	30/35
INF/DE30/40	70	30/40
INF/DE30/45	75	30/45
INF/DE30/50	80	30/50
INF/DE30/55	85	30/55
INF/DE70	70	35/35
INF/DE35/40	75	35/40
INF/DE35/45	80	35/45
INF/DE35/50	85	35/50
INF/DE35/55	90	35/55
INF/DE35/60	95	35/60
INF/DE35/70	105	35/70
INF/DE35/70B	105	35/70
INF/DE80	80	40/40
INF/DE40/45	85	40/45
INF/DE40/50	90	40/50
INF/DE40/55	95	40/55
INF/DE40/60	100	40/60
INF/DE90	90	45/45
INF/DE45/50	95	45/50
INF/DE45/55	100	45/55
INF/DE100	100	50/50

Thumb-turn Euro

Please indicate which side the knob should be fitted*

Alternative large thumb-turn

Single thumbturn HEK/40 see page C4.1



* Note that when specifying the dimensions, it is the first dimension that relates to the knob turn. e.g. KE30/40 = knob turn on 30mm side.

CODE	LENGTH	SPLIT
INF/KE60	60	30/30
INF/KE30/35	65	30/35
INF/KE30/40	70	30/40
INF/KE30/45	75	30/45
INF/KE30/50	80	30/50
INF/KE30/55	85	30/55
INF/KE70	70	35/35
INF/KE35/40	75	35/40
INF/KE35/45	80	35/45
INF/KE35/50	85	35/50
INF/KE35/55	90	35/55
INF/KE35/60	95	35/60
INF/KE35/70	105	35/70
INF/KE80	80	40/40
INF/KE40/45	85	40/45
INF/KE40/50	90	40/50
INF/KE40/55	95	40/55
INF/KE40/60	100	40/60
INF/KE90	90	45/45
INF/KE45/50	95	45/50
INF/KE45/55	100	45/55
INF/KE100	100	50/50



ANKER



Rim cylinder

CODE
INF-RC



Scandinavian oval



External
Internal

CODE
INF-SOE
INF-SOI



Screw-in cylinder

CODE
INF-SC



Cam lock

CODE
INF-CL



Switch lock

CODE
INF-SW



Cabinet lock

CODE
INF-CAB

PHONE: +44 (0)208 368 5933

EMAIL: sales@q-locks.co.uk

WEB: www.q-locks.co.uk

